

LUMINOVA

Featuring ultra-low UGR13 and dual-output optics (up/downlight), these linear lights deliver glare-free, layered illumination for premium spaces. The smart dual-CCT system (2700K-6500K) enables dynamic ambiance control via app or DALI. High-CRI LEDs (>95) ensure precise color fidelity, while slim, anodized aluminum profiles with matte finishes blend seamlessly into modern interiors.



WIDELY ROTATION
355°turning range , 180°swivel range



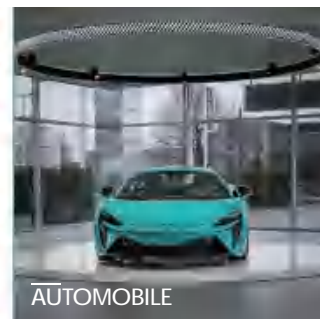
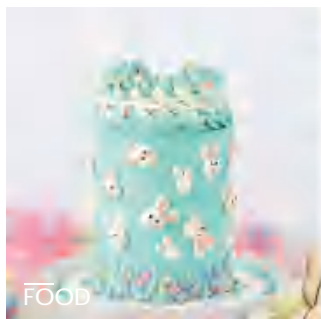
FLEXIBLE INSTALLATION
with 5 different size of the cutting hole, 65mm, 75mm, 90mm, 120mm , 140mm










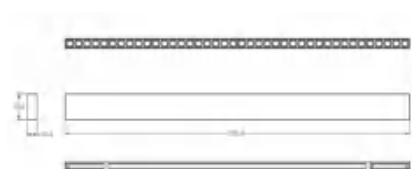
RA
High CRI up to 97



FLEXIBLE INSTALLATION
with 2 different size of the cutting hole 75mm, 95mm.



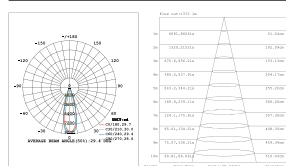
Product series	LUMINOVA
Application areas	Office light
Pan/tilt range	Fixed
Mounting	Pendent
Lighting technology	LED
LED Luminous Flux Class	120LM/W
Light colour White	3000K, 4000K, 5000K
Cooling	Passive
Supply unit	Driver integrated
Luminaire colour	RAL 9005 jet black RAL 9006 white aluminium RAL 9016 traffic white Special colours on request
Surface	Structure powder-coated
Nominal voltage	100-240V,50/60Hz
Lighting controls	On request
Weight	Approx.2.39KG
Test seal	      



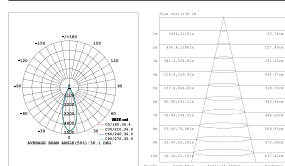
Code composition/ Composizione del codice

Model	Power	Light flux	Color	Size	Beam Angle	Function
GMP037	18+40W	80lm/w	BK/WH	1200*35*H90mm	20/40/60D	ON/OFF DIM/DALI/0-10V ZIGBEE

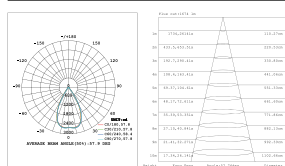
24°-3000K-CRI90







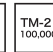


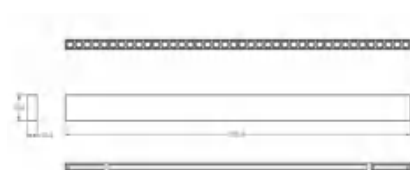
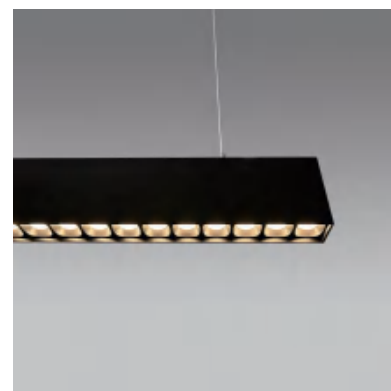
40°-3000K-CRI90



60°-3000K-CRI90



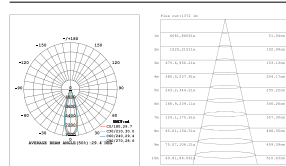
Product series	Luminova
Application areas	Office light
Pan/tilt range	Fixed
Mounting	Pendent
Lighting technology	LED
LED Luminous Flux Class	120LM/W
Light colour White	3000K, 4000K, 5000K
Cooling	Passive
Supply unit	Driver integrated
Luminaire colour	RAL 9005 jet black RAL 9006 white aluminium RAL 9016 traffic white Special colours on request
Surface	Structure powder-coated
Nominal voltage	100-240V,50/60Hz
Lighting controls	On request
Weight	Approx.2.39KG
Test seal	      



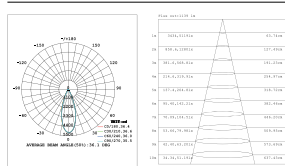
Code composition/ Composizione del codice

Model	Power	Light flux	Color	Size	Beam Angle	Function
GMP037	18+44W	80lm/w	BK/WH	1200*35*H90mm	20/40/60D	ON/OFF DIM/DALI/0-10V ZIGBEE

24°-3000K-CRI90



40°-3000K-CRI90



60°-3000K-CRI90

